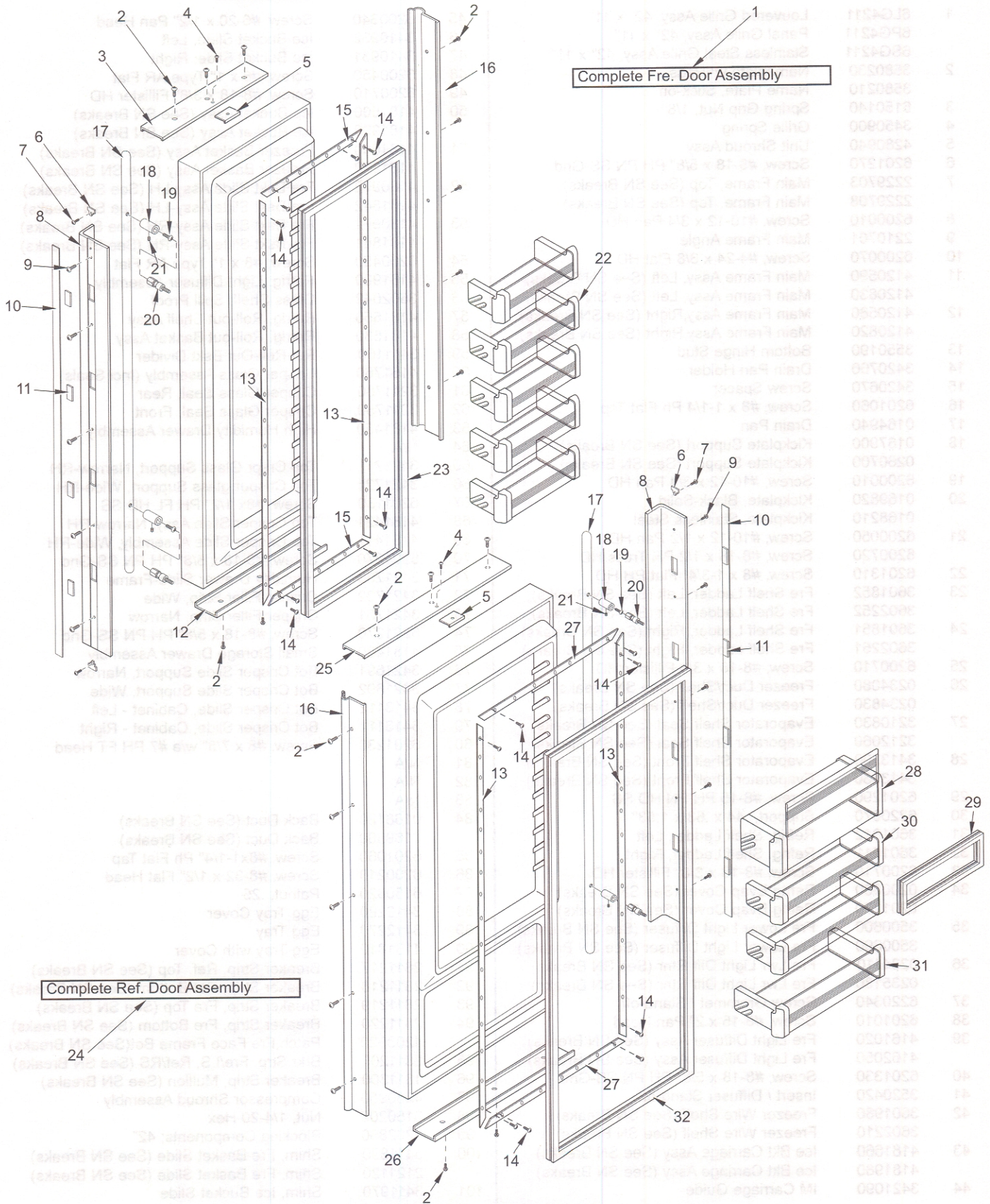


642 DOOR PARTS LIST

<u>Ref #</u>	<u>Part #</u>	<u>Description</u>	<u>Ref #</u>	<u>Part #</u>	<u>Description</u>
1	4132055	Freezer Door Assy, Frame/Overlay (See SN Breaks)	17	4132190	Handle Assy, SS Round End (Incl. Stand-offs) - (See SN Breaks)
	4133175	Freezer Door Assy, Frame/Overlay (See SN Breaks)		4133580	Handle Assy, SS Blunt (Incl Stand-offs) (See SN Breaks)
	4132565	Fre Door Assy, SS (See SN Breaks)		4133730	Handle Assy, SS OBR Standoffs (See SN Breaks)
	4133235	Fre Door Assy, SS (See SN Breaks)			
2	6200720	Screw, #8-18 x 1/2 PH Truss HD	18	3511320	Handle Stand-off 1"D (See SN Breaks)
3	2230617	Door Trim, Top; Freezer		3512150	Standoff, SS Oval (See SN Breaks)
4	6200720	Screw, #8-18 x 1/2 PH Truss HD	19	6110540	Bolt, #10-24 x 1/2 Flat Socket HD
5	4200940	Switch Depressor (Includes Screw)	20	3511330	Handle Mounting Stud
6	3413340	Handle/Trim End Cap	21	6110730	Set Screw #10-32 X 1/4 SS Cone
7	6180160	Rivet, Open End Blind, 1/8 x 3/16	22	4330580	Fre Door Shelf Assy (See SN Breaks)
8	4132220	Door Handle Assembly (Framed)		4330650	Fre Door Shelf Assy (See SN Breaks)
	4132320	Handle-Side Door Trim (Overlay)	23	3211670	Door Gasket, Fre (See SN Breaks)
9	6201300	Tapping Screw, #8 x 1/2		3212190	Door Gasket, Fre (See SN Breaks)
10	4131860	Handle/Trim Molding Assy	24	4133155	Refrigerator Door Assy, Frame/Overlay
11	3451000	Magnet, Trim Strip - 3"		4133225	Refrigerator Door Assy, SS
12	2230618	Door Trim, Bottom; Freezer	25	2230615	Door Trim, Top; Refrigerator
13	3420260	Gasket Retainer, 66.875"	26	2230616	Door Trim, Bottom; Refrigerator
14	6200410	Screw, #8 x 1/2 Slot Head Hex	27	3421620	Gasket Retainer, 23.125"
15	3421610	Gasket Retainer, 13.813"	28	4330560	Dairy Compartment Assy
16	3511130	Door Trim, Hinge Side - (SS Model)	29	3211850	Dairy Compartment Gasket
	3511131	Door Trim, Hinge Side - Mitered Corner	30	4330530	Refrig. Door Shelf Assy
			31	4330540	Gallon Door Shelf Assy (Sales Acc.)
			32	3212180	Door Gasket, Refrigerator

642 DOOR VIEW

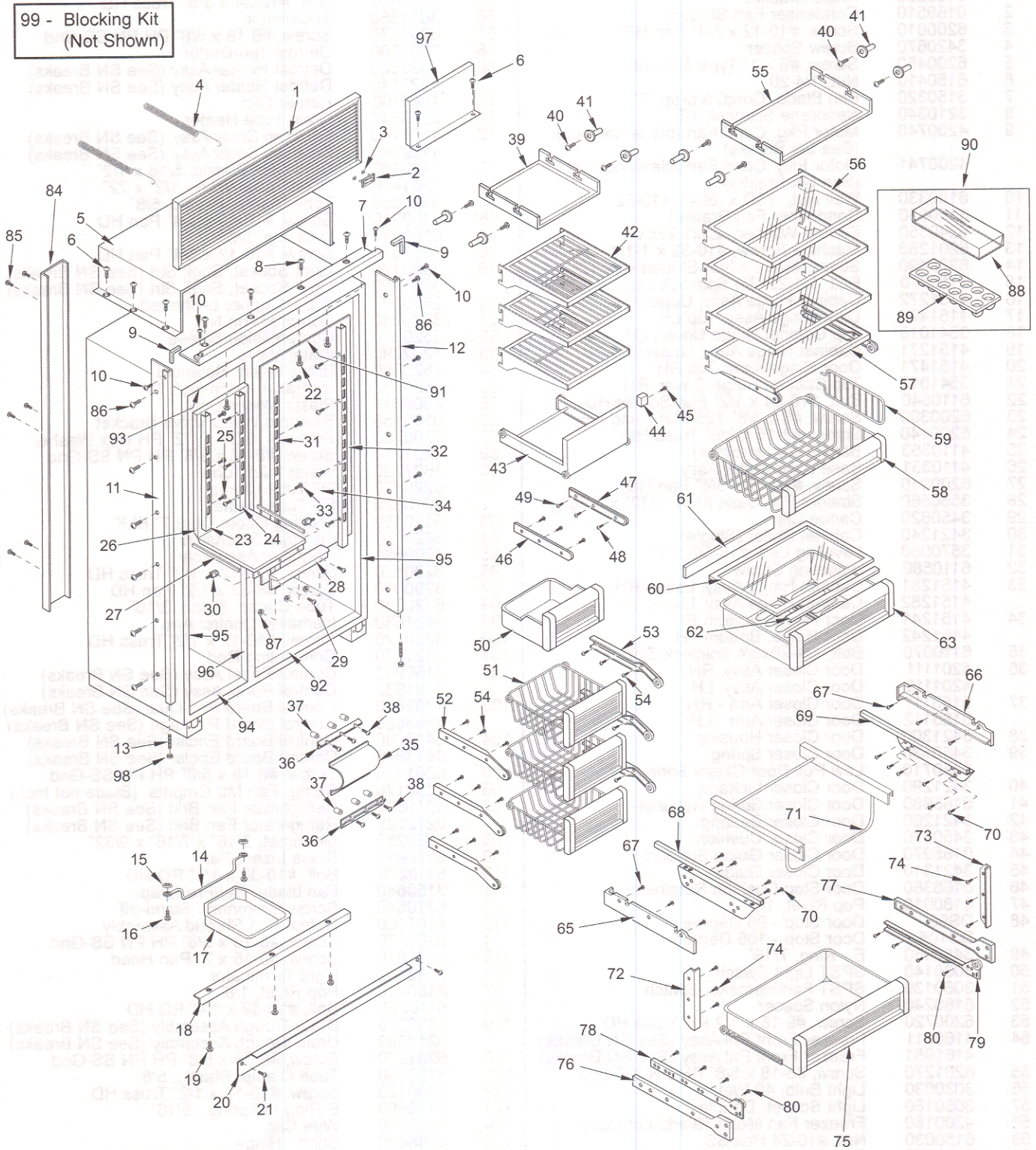


642 COSMETIC PARTS LIST

Ref #	Part #	Description	Ref #	Part #	Description
1	6LG4211	Louvered Grille Assy, 42" x 11"	45	6200340	Screw, #6-20 x 1/2" Pan Head
	6PG4211	Panel Grille Assy, 42" x 11"	46	3410932	Ice Bucket Slide, Left
	6SG4211	Stainless Steel Grille Assy, 42" x 11"	47	3410931	Ice Bucket Slide, Right
2	3580230	Nameplate w/ Pegs	48	6200450	Screw, #8 x 1" Type AR Flat
	3580210	Name Plate, Stick-on	49	6200710	Screw, #8-18 x 3/8" Fillister HD
3	6150140	Spring Grip Nut, 1/8"	50	4181500	Ice Bucket Assy (See SN Breaks)
4	3450900	Grille Spring		4181960	Ice Bucket Assy (See SN Breaks)
5	4280940	Unit Shroud Assy	51	4181640	Freezer Basket Assy (See SN Breaks)
6	6201270	Screw, #8-18 x 5/8" PH PN SS-Gnd		4181970	Freezer Basket Assy (See SN Breaks)
7	2229703	Main Frame, Top (See SN Breaks)	52	4180972	Fre Bskt Slide Assy-LH (See SN Breaks)
	2229708	Main Frame, Top (See SN Breaks)		4181842	Fre Bskt Slide Assy-LH (See SN Breaks)
8	6200010	Screw, #10-12 x 3/4 Pan HD	53	4180971	Fre Bskt Slide Assy-RH (See SN Breaks)
9	2210701	Main Frame Angle		4181841	Fre Bskt Slide Assy-RH (See SN Breaks)
10	6200070	Screw, #4-24 x 3/8 Flat HD	54	6200450	Screw, #8 x 1" Type AR Flat
11	4120590	Main Frame Assy, Left (See SN Breaks)	55	4161990	Refrig. Light Diffuser Assembly
	4120830	Main Frame Assy, Left (See SN Breaks)	56	3602042	Glass Shelf, Spill Proof
12	4120580	Main Frame Assy, Right (See SN Breaks)	57	4181650	Refrig. Roll-out Shelf Assy
	4120820	Main Frame Assy, Right (See SN Breaks)	58	4181530	Refrig. Roll-out Basket Assy
13	3550190	Bottom Hinge Stud	59	3411160	Ref Roll-Out Bskt Divider
14	3420760	Drain Pan Holder	60	4151760	Crisper Glass Assembly (Incl Seals)
15	3420670	Screw Spacer	61	3211780	Crisper Glass Seal, Rear
16	6201060	Screw, #8 x 1-1/4 Ph Flat Tap	62	3211750	Crisper Glass Seal, Front
17	0164940	Drain Pan	63	4181450	High Humidity Drawer Assembly
18	0167900	Kickplate Support (See SN Breaks)	64	N/A	
	0260700	Kickplate Support (See SN Breaks)	65	3421711	Top Crspr Glass Support, Narrow-RH
19	6200010	Screw, #10-12 x 3/4 Pan HD	66	3421721	Top Crisper glass Support, Wide-RH
20	0169820	Kickplate, Black-Solid	67	6201130	Screw, #8x 1/2" PH FL HD SS
	0168210	Kickplate, Stainless Steel	68	4181421	Top Crisper Slide Assy, Narrow-RH
21	6200050	Screw, #10-12 x 1/2 Pan HD	69	4181411	Top Crisper Slide Assembly, Wide-RH
	6200720	Screw, #8-18 x 1/2 PH Truss HD	70	6201270	Screw, #8-18 x 5/8" PH PN SS-Gnd
22	6201310	Screw, #8 x 1-3/4" Flat PH HD	71	3421780	Humidity Drawer Slide-Frame
23	3601852	Fre Shelf Ladder, Left (See SN Breaks)	72	3421732	Crisper Filler Strip, Wide
	3602252	Fre Shelf Ladder, Left (See SN Breaks)	73	3421731	Crisper Filler Strip, Narrow
24	3601851	Fre Shelf Ladder, Right (See SN Breaks)	74	6201270	Screw, #8-18 x 5/8" PH PN SS-Gnd
	3602251	Fre Shelf Ladder, Right (See SN Breaks)	75	4181480	Small Storage Drawer Assembly
25	6200710	Screw, #8-18 x 3/8 Fillister HD	76	3421691	Bot Crisper Slide Support, Narrow
26	0234080	Freezer Duct/Shelf (See SN Breaks)	77	3421692	Bot Crisper Slide Support, Wide
	0234830	Freezer Duct/Shelf (See SN Breaks)	78	3413112	Bot Crisper Slide, Cabinet - Left
27	3210830	Evaporator Shelf Seal (See SN Breaks)	79	3413111	Bot Crisper Slide, Cabinet - Right
	3212060	Evaporator Shelf Seal (See SN Breaks)	80	6201230	Screw, #8 x 7/8" w/a #7 PH FT Head
28	3413200	Evaporator Shelf Front (See SN Breaks)	81	N/A	
	3413930	Evaporator Shelf Front (See SN Breaks)	82	N/A	
29	6201290	Screw, #8-15 PH PN HD SS	83	N/A	
30	6220070	Support, .44 x .63 x 1.53"	84	0168120	Back Duct (See SN Breaks)
31	3601812	Refrig. Shelf Ladder, Left		0169600	Back Duct (See SN Breaks)
32	3601811	Refrig. Shelf Ladder, Right	85	6201060	Screw, #8x1-1/4" Ph Flat Tap
33	6200710	Screw, #8-18 x 3/8" Fillister HD	86	6200210	Screw, #8-32 x 1/2" Flat Head
34	0200860	Refrig Evap Cover (See SN Breaks)	87	6150820	Palnut, .25
	0201270	Refrig Evap Cover (See SN Breaks)	88	3412280	Egg Tray Cover
35	3500600	Fre Lower Light Diffuser (See SN Breaks)	89	3412270	Egg Tray
	3500690	Fre Lower Light Diffuser (See SN Breaks)	90	4131810	Egg Tray with Cover
36	0234110	Fre Lwr Light Diff Rtnr (See SN Breaks)	91	2811217	Breaker Strip, Ref. Top (See SN Breaks)
	0235130	Fre Lwr Light Diff Rtnr (See SN Breaks)	92	2811218	Breaker Strip, Ref Bottom (See SN Breaks)
37	6220340	Screw Grommet / Stand-off	93	2811219	Breaker Strip, Fre Top (See SN Breaks)
38	6201010	Screw, #8-15 x 2" Pan Head	94	2811220	Breaker Strip, Fre Bottom (See SN Breaks)
39	4161020	Fre Light Diffuser Assy (See SN Breaks)		4203920	Patch, Fre Face Frame Bot (See SN Breaks)
	4162050	Fre Light Diffuser Assy (See SN Breaks)	95	2811205	Brkr Strp, Fre/LS, Ref/RS (See SN Breaks)
40	6201330	Screw, #8-18 x 5/8" PH PN SS-Gnd	96	1811300	Breaker Strip, Mullion (See SN Breaks)
41	3520420	Insert / Diffuser Stand-off	97	4280950	Compressor Shroud Assembly
42	3601980	Freezer Wire Shelf (See SN Breaks)	98	6150200	Nut, 1/4-20 Hex
	3602210	Freezer Wire Shelf (See SN Breaks)	99	4202860	Blocking Components; 42"
43	4181660	Ice Bkt Carriage Assy (See SN Breaks)	100	3411890	Shim, Fre Basket Slide (See SN Breaks)
	4181980	Ice Bkt Carriage Assy (See SN Breaks)		2121120	Shim, Fre Basket Slide (See SN Breaks)
44	3421090	IM Carriage Guide	101	3411970	Shim, Ice Bucket Slide

642 COSMETIC VIEW

99 - Blocking Kit
(Not Shown)

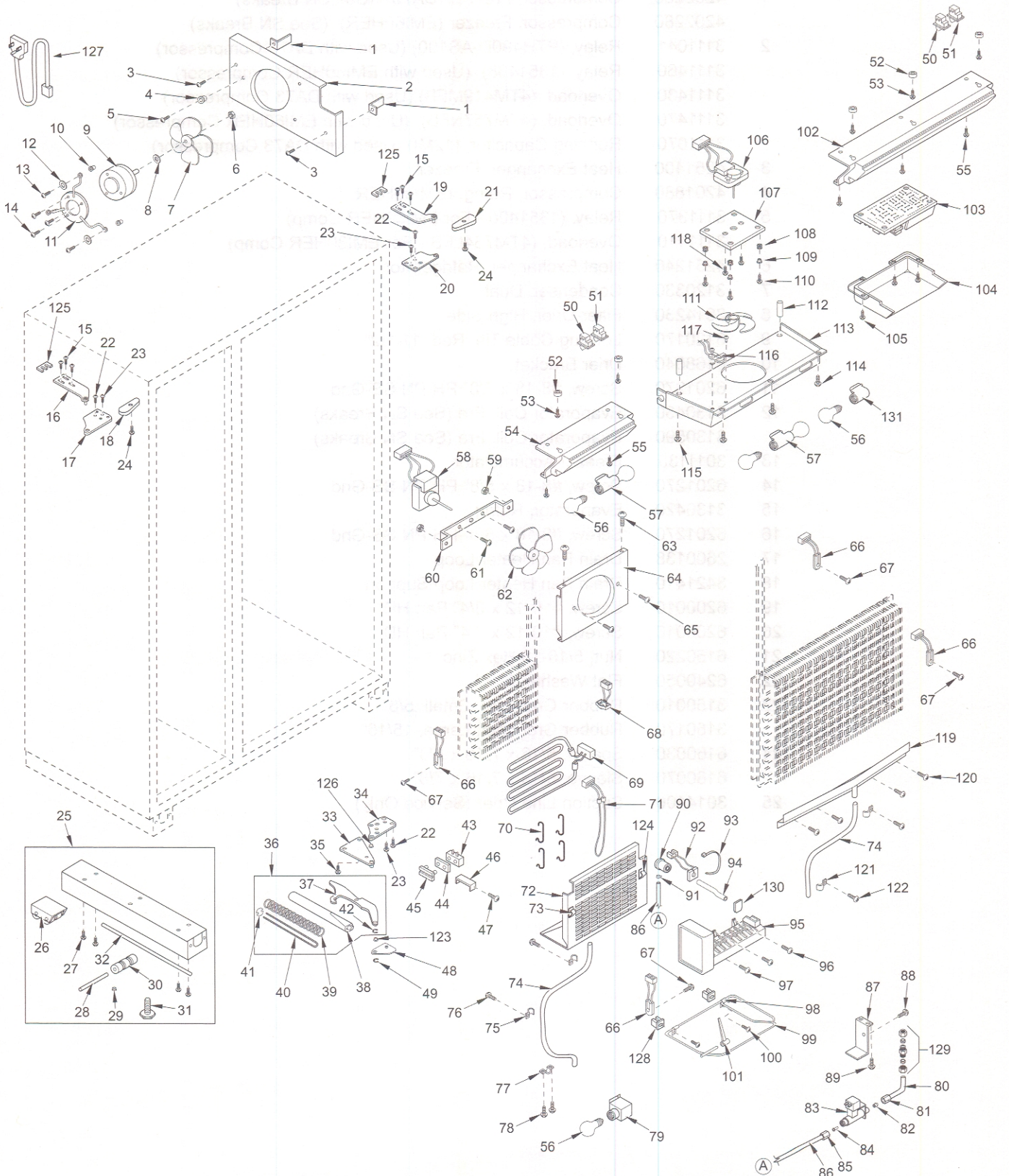


100 - Shim, Freezer Basket Slide (Not Shown)
101 - Shim, Ice Bucket Slide (Not Shown)

642 MECHANICAL PARTS LIST

Ref #	Part #	Description	Ref #	Part #	Description
1	3450290	Angle Bracket	65	6110020	Bolt, #10-24 x 3/8" Truss HD
2	0169510	Condenser Fan Shroud	66	3014350	Thermistor
3	6200010	Screw, #10-12 x 3/4" Pan HD	67	6201270	Screw, #8-18 x 5/8" PH PN SS-Gnd
4	3420670	Screw Spacer	68	3082060	Defrost Terminator
5	6200450	Screw, #8 x 1" Type AR Flat	69	4323820	Defrost Heater Assy (See SN Breaks)
6	6150410	Nut, 1/4-20		4322140	Defrost Heater Assy (See SN Breaks)
7	3150320	Fan Blade, Cond, 5 prop, 7"	70	1801100	Heater Clip
8	3210340	Neoprene Silencer, 7/8"	71	3013540	Drain Tube Heater
9	4200740	Motor Pkg, Cond Fan (blade not incl.) (See SN Breaks)	72	4151740	Fre Evap Cover Assy. (See SN Breaks)
	4200741	Motor Pkg, Cond Fan (blade not incl.) (See SN Breaks)		4152040	Fre Evap Cover Assy. (See SN Breaks)
10	6150330	Well Nut, .75D x .804", #10-32	73	6120160	Cord Clip, Plastic, 5/16 x 1/2"
11	3150650	Condenser Fan Bracket	74	1601400	Drain Tube, Wire - 1/2" x 72"
12	6240350	Fender Washer, .25x1.25x.06	75	6120050	Tube Clamp, Plastic, 5/8"
13	6201280	Machine Screw, #10-32 x 1-1/4"	76	6200010	Screw, #10-12 x 3/4" Pan HD
14	6200490	Screw, #8-32 x 3/8" Slotted Hex T25	77	6120210	U-Clamp, 5/8"
15	6110070	Bolt, 1/4-20x3/4 Spinlock Zinc	78	6200010	Screw, #10-12 x 3/4" Pan HD
16	4151272	Cabinet Hinge Assy, Upper LH	79	3050170	Light Socket, Sngl; Strt (See SN Breaks)
17	4151472	Door Hinge Assy, Top LH		3050200	Light Socket, Sngl; Strt (See SN Breaks)
18	3541018	Top Cabinet Hinge Cover, LH	80	2600297	Tube, Copper L-Shaped
19	4151271	Cabinet Hinge Assy, Upper RH	81	3520380	Compression Nut
20	4151471	Door Hinge Assy, Top RH	82	3520370	Compression Sleeve
21	3541017	Top Cabinet Hinge Cover, RH	83	4202790	Water Valve
22	6110540	Bolt, #10-24 x 1/2" Flat Socket HD	84	3520050	Brass Insert, Solenoid
23	6200390	Screw, #6 x 3/8" T25 Flat Head PH	85	3520030	Icemaker Nylon Nut, 1/4"
24	6200140	Screw, #8-15 x 3/8" Truss HD	86	2600617	Plastic Water Line
25	4110353	Base Assy (w/rollers)	87	0168160	Solenoid Water Valve Bracket
26	4110331	Base Rear Roller Assy	88	6200780	Screw, #10-24 x 1/2" PH Hex Washer
27	6200010	Screw, #10-12 x 3/4" Pan HD	89	6201270	Screw, #8-18 x 5/8" PH PN SS-Gnd
28	3550560	Straight Pin, Base Assy, .312" x 2.88"	90	1607700	Water Inlet Tube
29	3450620	Canoe Clip	91	6220470	Fill Tube Clamp
30	3421240	Cabinet Roller (Single)	92	3013820	Fill Tube Heater
31	3570050	Leveling Leg, #18-3/8 x 1"	93	6120450	Locking Cable Tie 9.7" BLK
32	6110580	Adjusting Screw	94	3024110	Fill Tube Extension
33	4151281	Cabinet Hinge Assy, Lower RH	95	4200521	Icemaker Assembly
	4151282	Cabinet Hinge Assy, Lower LH	96	6200120	Screw, #10-12 x 1/2" Truss HD
34	4151241	Door Hinge, Bottom RH	97	6200060	Screw, #8-32 x 1/2" Pan HD
	4151242	Door Hinge, Bottom LH	98	6120280	Tube Clamp, Nylon, 3/16"
35	6110070	Bolt, 1/4-20x3/4 Spinlock Zinc	99	3421630	Icemaker Control Arm
36	4201111	Door Closer Assy, RH	100	6200120	Screw, #10-12 x 1/2" Truss HD
	4201112	Door Closer Assy, LH	101	3421070	Connecting Rod
37	0183111	Door Closer Arm - RH	102	4160902	Control Panel Assy (See SN Breaks)
	0183112	Door Closer Arm - LH		4161932	Control Panel Assy (See SN Breaks)
38	3421300	Door Closer Housing	103	4202800	Control Board Pkg-Dual (See SN Breaks)
39	3450530	Door Closer Spring		4203520	Control Board Package (See SN Breaks)
	3450710	Low Pull Door Closer Spring	104	3412790	Control Board Enclsr (See SN Breaks)
40	3421290	Door Closer Linkage		3413940	Control Board Enclsr (See SN Breaks)
41	0165980	Door Closer Spring Retainer	105	6201270	Screw, #8-18 x 5/8" PH PN SS-Gnd
42	3421260	Door Closer Bearing	106	4200170	Refrig. Fan Mtr Cmpnts (Blade not Incl.)
43	3450570	Door Closer Cushion	107	0211620	Refrigerator Fan Brkt (See SN Breaks)
44	0165970	Door Closer Guide Support		0212520	Refrigerator Fan Brkt (See SN Breaks)
45	3421310	Door Closer Guide	108	3220250	Grommet, 3/16" x 7/16" x 9/32"
46	0166360	Door Stop Cushion Retainer	109	3520410	Brass Insert, Fan
47	6180010	Pop Rivet, 1/8"	110	6110270	Bolt, #10-32 x 1/4" RD HD
48	DS90	Door Stop - 90 Degree	111	3150640	Fan blade, Ref/Fre Evap.
	DS105	Door Stop - 105 Degree	112	6220540	Screw Grommet / Stand-off
49	3450560	E - Ring, 7/16"	113	4161980	Refrig. Fan Shroud Assembly
50	3060140	SPST Light Switch	114	6201270	Screw, #8-18 x 5/8" PH PN SS-Gnd
51	3060130	SPST Fan/Icemaker Switch	115	6201010	Screw, #8-15 x 2" Pan Head
52	6160240	Nylon Spacer	116	3082140	Light Terminator
53	6200720	Screw, #8-18 x 1/2 PH Truss HD	117	6180010	Pop Rivet, 1/8"
54	4160911	Freezer Front Pnl Assy (See SN Breaks)	118	6110270	Bolt, #10-32 x 1/4" RD HD
	4161951	Freezer Front Pnl Assy (See SN Breaks)	119	4190240	Drain Trough Assembly (See SN Breaks)
55	6201270	Screw, #8-18 x 5/8" PH PN SS-Gnd		0212600	Drain Trough Assembly (See SN Breaks)
56	3030030	Light Bulb, 40 Watt	120	6201270	Screw, #8-18 x 5/8" PH PN SS-Gnd
57	3050180	Light Socket, Double	121	6120050	Tube Clamp, Plastic, 5/8"
58	4200160	Freezer Fan Motor (Blade not Incl.)	122	6200120	Screw, #10-12 x 1/2" Truss HD
59	6150030	Nut, #10-24 Hex SS	123	3450550	E-Ring / Klipping , 5/16"
60	0232770	Fan Bracket, Freezer	124	6120330	Wire Clip
61	6110270	Bolt, #10-32 x 1/4" RD HD	125	0168680	Shim - Hinge
62	3150060	Fan Blade; Freezer; 5 Prop; 5-1/2"	126	3421270	Hinge Bearing, 3/8" x 5/8"
63	6201270	Screw, #8-18 x 5/8" PH PN SS-Gnd	127	4321820	Power Cord
64	0234120	Fre Evap Fan Shroud (See SN Breaks)	128	6220220	Screw Grommet, 1/32" X 3/8" SQ.
	0234880	Fre Evap Fan Shroud (See SN Breaks)	129	3520250	Water Inlet Fitting Assy
			130	3140360	Fill Cup Plug
			131	3050190	Light Socket, Single

642 MECHANICAL VIEW



642 SEALED SYSTEM PARTS LIST

<u>Ref #</u>	<u>Part #</u>	<u>Description</u>
1	4202250	Compressor, Freezer (DA73) (See SN Breaks)
	4202280	Compressor, Freezer (EMI60HER) (See SN Breaks)
2	3111041	Relay, (PTH490D-AS100) (Used with DA73 Compressor)
	3111460	Relay, (1351408) (Used with EMI60HER Compressor)
	3111430	Overload, (4TM419MFB) (Used with DA73 Compressor)
	3111470	Overload, (4TM757NFB) (Used with EMI60HER Compressor)
	3111070	Running Capacitor, (12Mf) (Used with DA73 Compressor)
3	4251400	Heat Exchanger, Freezer
4	4201880	Compressor, Refrig. (EMI30HER)
5	3111370	Relay, (1351400 - For EMI30HER Comp)
	3111410	Overload, (4TM734LFB - For EMI30HER Comp)
6	4251240	Heat Exchanger, Refrigerator
7	3120330	Condenser, Dual
8	3014230	Filter-Drier, High Side
9	6120170	Locking Cable Tie, Red, 11-1/2"
10	0168040	Drier Bracket
11	6201270	Screw, #8-18 x 5/8" PH PN SS-Gnd
12	3130430	Evaporator Coil, Fre (See SN Breaks)
	3130590	Evaporator Coil, Fre (See SN Breaks)
13	3011130	Freezer Accumulator
14	6201270	Screw, #8-18 x 5/8" PH PN SS-Gnd
15	3130420	Evaporator, Refrig.
16	6201270	Screw, #8-18 x 5/8" PH PN SS-Gnd
17	2600138	Drain Pan Heater Loop
18	3421410	Drain Pan Heater Loop Support
19	6200010	Screw, #10-12 x 3/4" Pan HD
20	6200010	Screw, #10-12 x 3/4" Pan HD
21	6150220	Nut, 5/16-18 Hex Zinc
22	6240050	Flat Washer, 5/16"
23	3150010	Rubber Grommet, Small, 5/8"
	3150170	Rubber Grommet, Large, 15/16"
24	6160030	Spacer, 5/16 x 7/16 x 5/8"
	6160070	Sleeve, 5/16 x 7/16 x 7/8"
25	3014100	Suction Line Drier (Service Only)

642 SEALED SYSTEM VIEW

