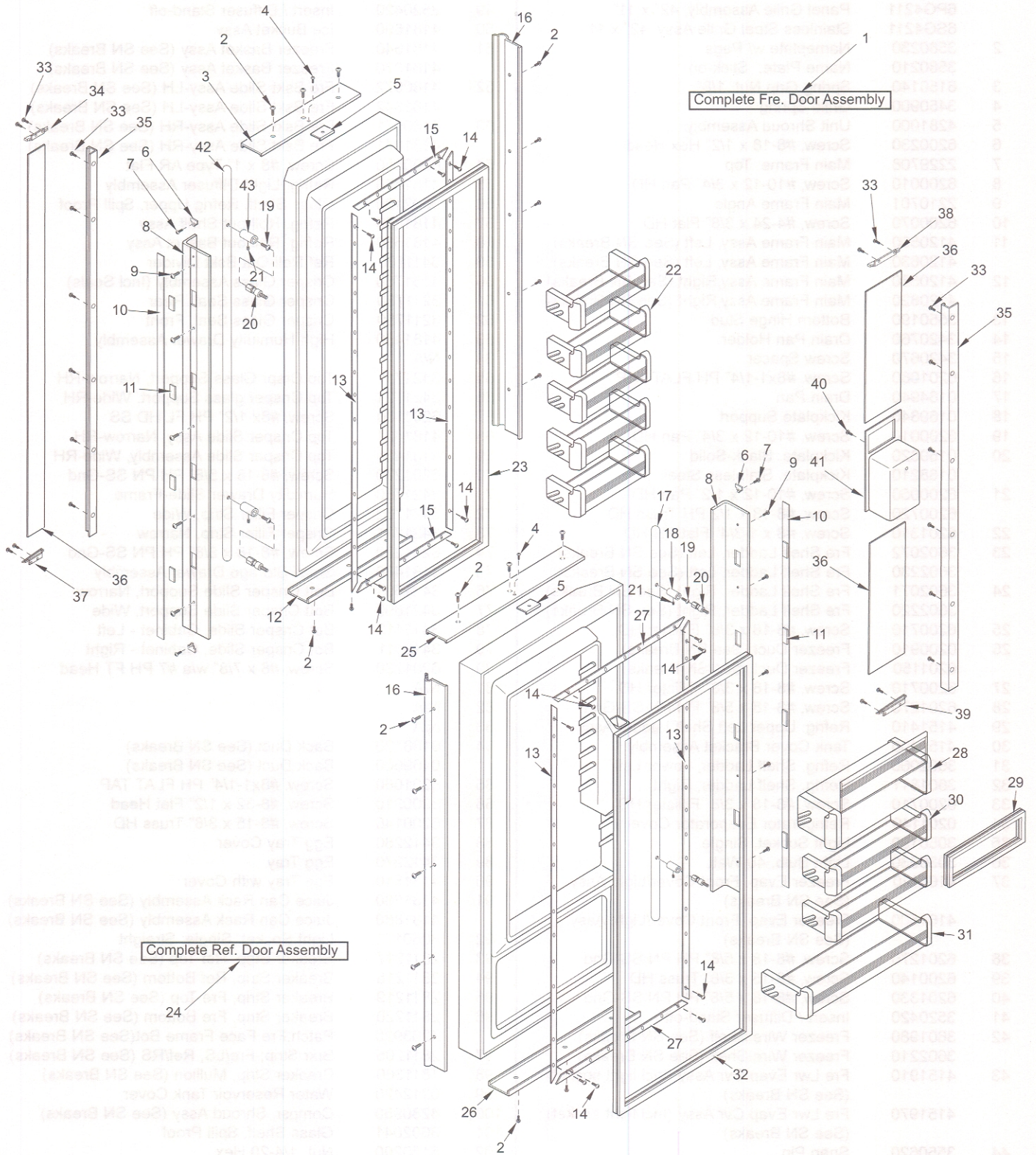


680 DOOR PARTS LIST

Ref #	Part #	Description	Ref #	Part #	Description
1	4132675	Fre Door Assy-Framd(See SN Breaks)	28	4330620	Dairy Compartment Assembly
	4132925	Fre Door Assy-Framd(See SN Breaks)	29	3211910	Dairy Compartment Gasket
	4132695	Fre Door Assy - SS (See SN Breaks)	30	4330630	Upper Refrig. Door Shelf Assembly
	4133275	Fre Door Assy - SS (See SN Breaks)	31	4330550	Refrig. Door Shelf Assembly (Regular)
2	6200720	Screw, #8-18 x 1/2 PH Truss HD		4330540	Gallon Door Shelf Assy (Sales Acc.)
3	2230617	Door Trim, Top; Freezer	32	3212180	Door Gasket, Refrigerator
4	6200720	Screw, #8-18 x 1/2 PH Truss HD	33	6200840	Screw, #10 x 1/2" PH FH AB SS
5	4200940	Switch Depressor (Includes Screw)	34	3413451	Top Trim Filler, Freezer Door
6	3413340	Handle/Trim End Cap	35	3511470	Vertical Trim Strip
7	6180160	Rivet, Open End Blind, 1/8" X 3/16"	36	P1/P2	Hndl Insrt-Brt White / Almond Buff
8	4132650	Door Handle Assy, 67.88"		P3/P4	Handle Insert-Camel/Adobe
9	6201300	Tapping Screw, #8 x 1/2"		P5	Handle Insert-Brushed Pewter
10	4131860	Handle/Trim Molding Assembly		P6/P7	Hndl Insrt-Smoke Gray / Charcoal
11	3451000	Magnet, Trim Strip - 3"		P8/P9	Hndl Insrt-Port Brown / Black Slate
12	2230618	Door Trim, Bottom; Freezer		P10	Handle Insert-Stainless Steel
13	3420260	Gasket Retainer, 66.875"		P11	Handle Insert-White Enamel
14	6200410	Screw, #8 x 1/2" Slot Head Hex		P12	Handle Insert-Avocado Enamel
15	3421610	Gasket Retainer, 13.813"		P13	Handle Insert-Harvest Gold Enamel
16	3511131	Door Trim, Hinge Side - Mitered Corner		P14	Handle Insert-Almond Enamel
	3511130	Door Trim, Hinge Side - (SS Model)		P15	Handle Insert-Coffee Enamel
17	4132630	Handle Assy, SS 7/8"D X 43"L-Ref (Incl Stnd-off) (See SN Breaks)	37	3413452	Bottom Trim Filler, Freezer Door
	4133100	Handle Assy, SS 1"D Rnd-Ref (Incl Stnd-off) (See SN Breaks)	38	3413441	Top Trim Filler, Refrig. Door
	4133650	Handle Assy, SS 1"D Blnt-Ref (Incl Stnd-off) (See SN Breaks)	39	3413442	Bottom Trim Filler, Refrig. Door
	4133740	Handle Assy, SS OBR Standoff-Ref (See SN Breaks)	40	6200900	Screw, #8 x 1/2" PH FH Hi-Lo
18	3511490	Refrig Hndl Stand-off, 7/8"D / 3.5 Deg. (See SN Breaks)	41	G1	Glass Well-Bright White
	3511850	Refrig Hndl Stand-off, 1"D / 3.5 Deg. (See SN Breaks)		G2	Glass Well-Almond Buff
	3512170	Standoff, SS Oval, Ref 4 Deg. (See SN Breaks)		G3	Glass Well-Camel
19	6110720	Bolt #10-24X1/2 Socket HD Cap		G4	Glass Well-Adobe
20	3511520	Handle Mounting Stud		G5	Glass Well-Brushed Pewter
21	6110730	Set Screw #10-32 X 1/4 SS Cone		G6	Glass Well-Smoke Gray
22	4330580	Fre Door Shelf Assy (See SN Breaks)		G7	Glass Well-Charcoal
	4330650	Fre Door Shelf Assy (See SN Breaks)		G8	Glass Well-Port Brown
23	3211670	Door Gasket, Fre (See SN Breaks)		G9	Glass Well-Black Slate
	3212190	Door Gasket, Fre (See SN Breaks)		3413410	Glass Well-StnlS Steel (SS Model Only)
24	4132665	Ref Door Assy-Framd(See SN Breaks)	42	4132640	Handle Assy, SS 7/8"D-Fre (Incl Stnd-off) (See SN Breaks)
	4132915	Ref Door Assy-Framd(See SN Breaks)		4133110	Hndl Assy, SS 1"D Rnd-Fre (Incl Stnd- offs) (See SN Breaks)
	4132685	Ref Door Assy - SS (See SN Breaks)		4133660	Hndl Assy, SS 1"D Blnt-Fre (Incl Stnd- offs) (See SN Breaks)
	4133265	Ref Door Assy - SS (See SN Breaks)		4133750	Handle Assy, SS OBR Standoff-Fre (See SN Breaks)
25	2230615	Door Trim, Top; Refrigerator	43	3511480	Fre. Handle Stand-off, 7/8"D / 10 Deg. (See SN Breaks)
26	2230616	Door Trim, Bottom; Refrigerator		3511860	Fre. Handle Stand-off, 1"D / 10 Deg. (See SN Breaks)
27	3421620	Gasket Retainer, 23.125"		3152180	Standoff, SS Oval, Fre 10 Deg. (See SN Breaks)

680 DOOR VIEW

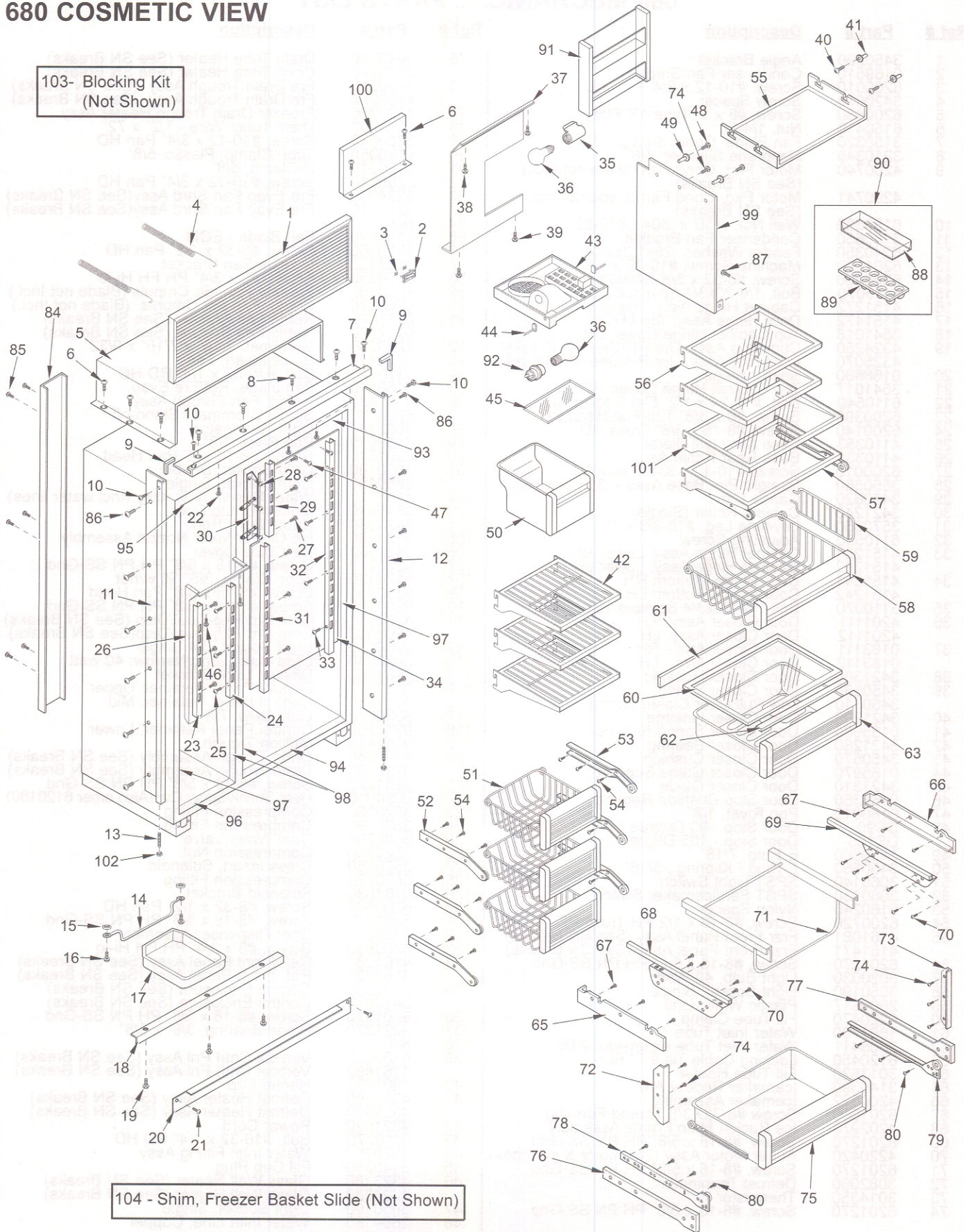


680 COSMETIC PARTS LIST

Ref #	Part #	Description	Ref #	Part #	Description
1	6LG4211	Louvered Grille Assembly, 42" x 11"	48	6201330	Screw, #8-18 x 5/8" PH PN SS-Gnd
	6PG4211	Panel Grille Assembly, 42" x 11"	49	3520420	Insert / Diffuser Stand-off
	6SG4211	Stainless Steel Grille Assy, 42" x 11"	50	4181690	Ice Bucket Assy
2	3580230	Nameplate w/ Pegs	51	4181640	Freezer Basket Assy (See SN Breaks)
	3580210	Name Plate, Stick-on		4181970	Freezer Basket Assy (See SN Breaks)
3	6150140	Spring Grip Nut, 1/8"	52	4180972	Fre Bskt Slide Assy-LH (See SN Breaks)
4	3450900	Grille Spring		4181842	Fre Bskt Slide Assy-LH (See SN Breaks)
5	4281000	Unit Shroud Assembly	53	4180971	Fre Bskt Slide Assy-RH (See SN Breaks)
6	6200230	Screw, #8-18 x 1/2" Hex Head		4181841	Fre Bskt Slide Assy-RH (See SN Breaks)
7	2229708	Main Frame, Top	54	6200450	Screw, #8 x 1" Type AR Flat
8	6200010	Screw, #10-12 x 3/4" Pan HD	55	4161490	Refrig. Light Diffuser Assembly
9	2210701	Main Frame Angle	56	3602100	Glass Shelf, Refrig Upper, Spill Proof
10	6200070	Screw, #4-24 x 3/8" Flat HD	57	4181650	Refrig. Roll-out Shelf Assy
11	4120590	Main Frame Assy, Left (See SN Breaks)	58	4181530	Refrig. Roll-out Basket Assy
	4120830	Main Frame Assy, Left (See SN Breaks)	59	3411160	Ref Roll-Out Bskt Divider
12	4120580	Main Frame Assy, Right (See SN Breaks)	60	4151760	Crisper Glass Assembly (Incl Seals)
	4120820	Main Frame Assy, Right (See SN Breaks)	61	3211780	Crisper Glass Seal, Rear
13	3550190	Bottom Hinge Stud	62	3211750	Crisper Glass Seal, Front
14	3420760	Drain Pan Holder	63	4181450	High Humidity Drawer Assembly
15	3420670	Screw Spacer	64	N/A	
16	6201060	Screw, #8x1-1/4" PH FLAT TAP	65	3421711	Top Crspr Glass Support, Narrow-RH
17	0164940	Drain Pan	66	3421721	Top Crisper glass Support, Wide-RH
18	0169840	Kickplate Support	67	6201130	Screw, #8x 1/2" PH FL HD SS
19	6200010	Screw, #10-12 x 3/4" Pan HD	68	4181421	Top Crisper Slide Assy, Narrow-RH
20	0169820	Kickplate, Black-Solid	69	4181411	Top Crisper Slide Assembly, Wide-RH
	0168210	Kickplate, Stainless Steel	70	6201270	Screw, #8-18 x 5/8" PH PN SS-Gnd
21	6200050	Screw, #10-12 x 1/2" Pan HD	71	3421780	Humidity Drawer Slide-Frame
	6200720	Screw, #8-18 x 1/2 PH Truss HD	72	3421732	Crisper Filler Strip, Wide
22	6201310	Screw, #8 x 1-3/4" Flat PH HD	73	3421731	Crisper Filler Strip, Narrow
23	3602072	Fre Shelf Ladder, Left (See SN Breaks)	74	6201270	Screw, #8-18 x 5/8" PH PN SS-Gnd
	3602230	Fre Shelf Ladder, Left (See SN Breaks)	75	4181480	Small Storage Drawer Assembly
24	3602071	Fre Shelf Ladder, Right (See SN Breaks)	76	3421691	Bott Crisper Slide Support, Narrow
	3602220	Fre Shelf Ladder, Right (See SN Breaks)	77	3421692	Bott Crisper Slide Support, Wide
25	6200710	Screw, #8-18 x 3/8" Fillister HD	78	3413112	Bot Crisper Slide, Cabinet - Left
26	0200910	Freezer Duct (See SN Breaks)	79	3413111	Bot Crisper Slide, Cabinet - Right
	0201150	Freezer Duct (See SN Breaks)	80	6201230	Screw, #8 x 7/8" w/a #7 PH FT Head
27	6200710	Screw, #8-18 x 3/8" Fillister HD	81	N/A	
28	6201270	Screw, #8-18 x 5/8" PH PN SS-Gnd	82	N/A	
29	4151410	Refrig. Upper Left Shelf Ladder Assy	83	N/A	
30	4151400	Tank Cover Bracket Assembly	84	0168120	Back Duct (See SN Breaks)
31	3602060	Refrig. Shelf Ladder, Lower Left		0169600	Back Duct (See SN Breaks)
32	3601811	Refrig. Shelf Ladder, Right	85	6201060	Screw, #8x1-1/4" PH FLAT TAP
33	6200710	Screw, #8-18 x 3/8" Fillister HD	86	6200210	Screw, #8-32 x 1/2" Flat Head
34	0201140	Refrigerator Evaporator Cover	87	6200140	Screw, #8-15 x 3/8" Truss HD
35	3050190	Light Socket, Single	88	3412280	Egg Tray Cover
36	3030030	Light Bulb, 40 Watt	89	3412270	Egg Tray
37	4161120	Freezer Evap. Front Cover/Light Assy. (See SN Breaks)	90	4131810	Egg Tray with Cover
	4161500	Freezer Evap. Front Cover/Light Assy. (See SN Breaks)	91	4181680	Juice Can Rack Assembly (See SN Breaks)
				4181860	Juice Can Rack Assembly (See SN Breaks)
38	6201270	Screw, #8-18 x 5/8" PH PN SS-Gnd	92	3050170	Light Socket, Single; Straight
39	6200140	Screw, #8-15 x 3/8" Truss HD	93	2811217	Breaker Strip, Ref Top (See SN Breaks)
40	6201330	Screw, #8-18 x 5/8" PH PN SS-Gnd	94	2811218	Breaker Strip, Ref Bottom (See SN Breaks)
41	3520420	Insert / Diffuser Stand-off	95	2811219	Breaker Strip, Fre Top (See SN Breaks)
42	3601980	Freezer Wire Shelf (See SN Breaks)	96	2811220	Breaker Strip, Fre Bottom (See SN Breaks)
	3602210	Freezer Wire Shelf (See SN Breaks)		4203920	Patch, Fre Face Frame Bot (See SN Breaks)
43	4151910	Fre Lwr Evap Cvr Assy (Incl light socket) (See SN Breaks)	97	2811205	Brkr Strip; Fre/LS, Ref/RS (See SN Breaks)
	4151970	Fre Lwr Evap Cvr Assy (Incl light socket) (See SN Breaks)	98	1811300	Breaker Strip, Mullion (See SN Breaks)
			99	0212420	Water Reservoir Tank Cover
44	3550620	Snap Pin	100	4280950	Compsr. Shroud Assy (See SN Breaks)
45	3500620	Freezer Lower Light Diffuser	101	3602041	Glass Shelf, Spill Proof
46	6200140	Screw, #8-15 x 3/8" Truss HD	102	6150200	Nut, 1/4-20 Hex
47	6201270	Screw, #8-18 x 5/8" PH PN SS-Gnd	103	4202860	Blocking Components; 42"
			104	3411890	Shim, Fre Basket Slide (See SN Breaks)
				2121120	Shim, Fre Basket Slide (See SN Breaks)

680 COSMETIC VIEW

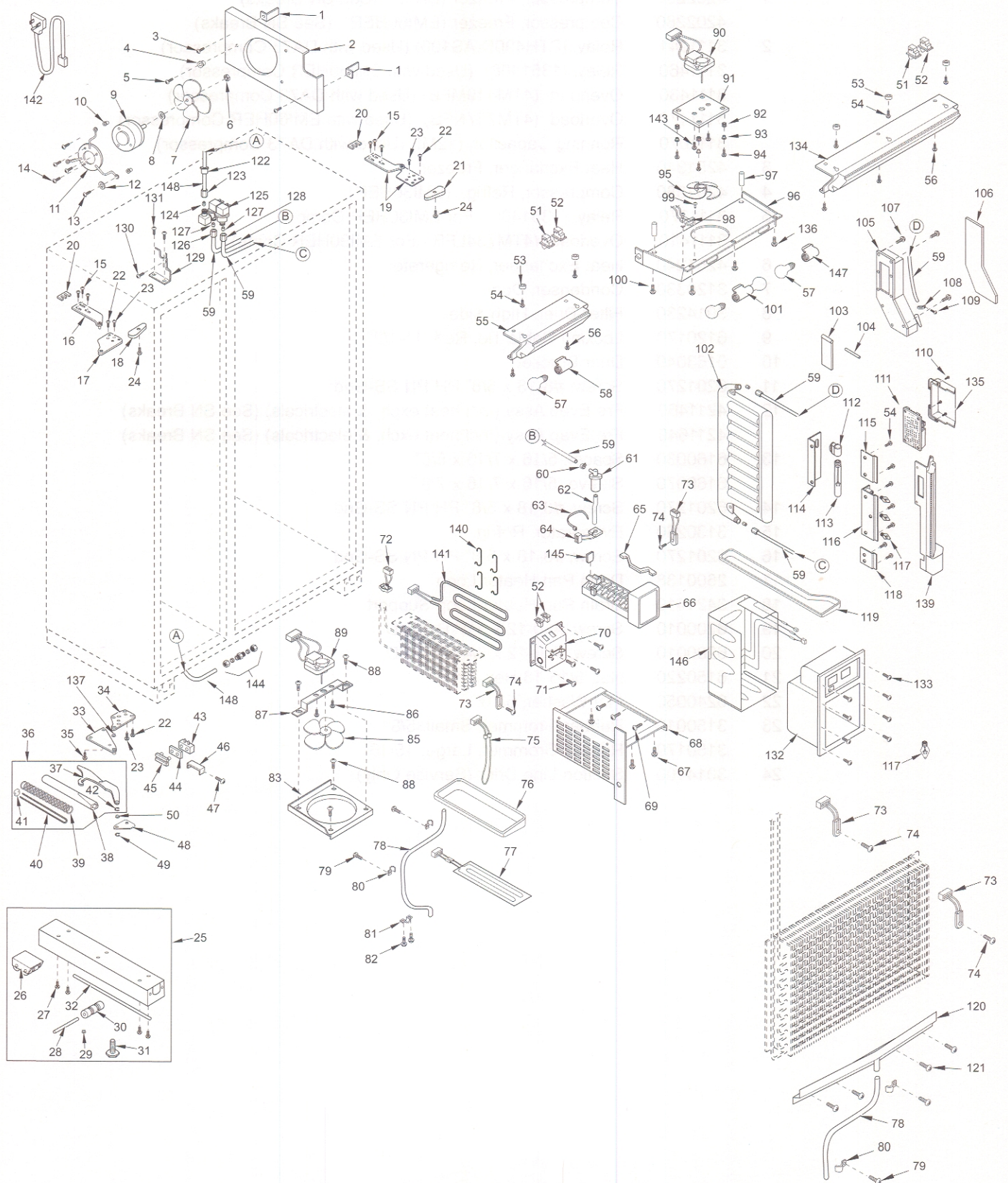
103- Blocking Kit
(Not Shown)



680 MECHANICAL PARTS LIST

Ref #	Part #	Description	Ref #	Part #	Description
1	3450290	Angle Bracket	75	3013540	Drain Tube Heater (See SN Breaks)
2	0169510	Condenser Fan Shroud		3070170	Drain Tube Heater (See SN Breaks)
3	6200010	Screw, #10-12 x 3/4" Pan HD	76	4190210	Fre Drain Trough Assy (See SN Breaks)
4	3420670	Screw Spacer		4190290	Fre Drain Trough Assy (See SN Breaks)
5	6200450	Screw, #8 x 1" Type AR Flat	77	4323200	Freezer Drain Trough Heater Assy
6	6150410	Nut, 1/4-20	78	1601400	Drain Tube, Wire - 1/2" x 72"
7	3150320	Fan Blade, Cond, 5 prop, 7"	79	6200010	Screw, #10-12 x 3/4" Pan HD
8	3210340	Neoprene Silencer, 7/8"	80	6120050	Tube Clamp, Plastic, 5/8"
9	4200740	Motor Pkg, Cond Fan (blade not incl.) (See SN Breaks)	81	6120210	U-Clamp, 5/8"
	4200741	Motor Pkg, Cond Fan (blade not incl.) (See SN Breaks)	82	6200010	Screw, #10-12 x 3/4" Pan HD
			83	0234210	Fre Evap Fan Shrd Assy(See SN Breaks)
				0234910	Fre Evap Fan Shrd Assy(See SN Breaks)
10	6150330	Well Nut, .75D x .804", #10-32	84	N/A	
11	3150650	Condenser Fan Bracket	85	3150570	Fan Blade - ECM
12	6240350	Fender Washer, .25x1.25x.06	86	6200060	Screw, #8-32 x 1/2" Pan HD
13	6201280	Machine Screw, #10-32 x 1-1/4"	87	0234220	Freezer Fan Bracket
14	6200490	Screw, #8-32 x 3/8" Slotted Hex T25	88	6200850	Screw, #8 x 3/4" PH FH Hi-lo
15	6110070	Bolt, 1/4-20x3/4 Spinlock Zinc	89	4200160	Freezer Fan Mtr Cmpnts (Blade not Incl.)
16	4151272	Cabinet Hinge Assy, Upper LH	90	4200170	Refrig. Fan Mtr Cmpnts (Blade not Incl.)
17	4151472	Door Hinge Assy, Top LH	91	0211620	Refrig Fan Bracket (See SN Breaks)
18	3541018	Top Cabinet Hinge Cover, LH		0212520	Refrig Fan Bracket (See SN Breaks)
19	4324250	Cbnt Hng Assy, Upr RH(See SN Breaks)	92	3220250	Grommet, 3/16" x 7/16" x 9/32"
	4325070	Cbnt Hng Assy, Upr RH(See SN Breaks)	93	3520410	Brass Insert, Fan
	0168680	Shim - Hinge	94	6110270	Bolt, #10-32 x 1/4" RD HD
20	3541017	Top Cabinet Hinge Cover, RH	95	3150640	Fan blade, Ref/Fre Evap.
21	6110540	Bolt, #10-24 x 1/2", Flat Socket HD	96	4161480	Refrig. Fan Shroud Assy
22	6200390	Screw, #6 x 3/8" T25 Flat Head PH	97	6220540	Screw Grommet / Stand-off
23	6200140	Screw, #8-15 x 3/8" Truss HD	98	3082140	Light Terminator
24	4110353	Base Assy (w/rollers)	99	6180010	Pop Rivet, 1/8"
25	4110331	Base Rear Roller Assy	100	6201010	Screw, #8-15 x 2" Pan Head
26	6200010	Screw, #10-12 x 3/4" Pan HD	101	3050180	Light Socket, Double
27	3550560	Straight Pin, Base Assy - .312" x 2.88"		3050190	Light Socket, Single
28	3450620	Canoe Clip	102	4181710	Water Resrvr Tank Assy (Incl water lines)
29	3421240	Cabinet Roller (Single)	103	3515940	Mullion Chute Door
30	3570050	Leveling Leg, #18-3/8 x 1"	104	3421360	Chute Door Rod
31	6110580	Adjusting Screw	105	4181230	Ice Chute/Water Nozzle Assembly
32	4151281	Cabinet Hinge Assy, Lower RH	106	3411530	Ice Chute Cover
33	4151282	Cabinet Hinge Assy, Lower LH	107	6201270	Screw, #8-18 x 5/8" PH PN SS-Gnd
34	4151241	Door Hinge, Bottom RH	108	6120120	Tube Clamp, 3/8" Stl w/nut
	4151242	Door Hinge, Bottom LH	109	6200330	Screw, #8-18 x 3/8" Pan Head
35	6110070	Bolt, 1/4-20x3/4 Spinlock Zinc	110	6201270	Screw, #8-18 x 5/8" PH PN SS-Gnd
36	4201111	Door Closer Assy, RH	111	4202811	Cntrl Brd Pkg-Dual/Disp (See SN Breaks)
	4201112	Door Closer Assy, LH		4203530	Cntrl Brd Pkg-Dual/Disp(See SN Breaks)
37	0183111	Door Closer Arm - RH	112	3050010	Light Socket, 3/4 Single
	0183112	Door Closer Arm - LH	113	3030040	Light Bulb, Long/Narrow; 40 watt
38	3421300	Door Closer Housing	114	4161050	Display Light Bracket
39	3450530	Door Closer Spring	115	0212270	Control Panel Retainer, Upper
	3450710	Low Pull Door Closer Spring	116	0212280	Control Panel Retainer, Mid
40	3421290	Door Closer Linkage	117	3030070	Light Bulb, 7W
41	0165980	Door Closer Spring Retainer	118	0212290	Control Panel Retainer, Lower
42	3421260	Door Closer Bearing	119	0212410	Mullion Trough
43	3450570	Door Closer Cushion	120	4190240	Drain Trough Assembly (See SN Breaks)
44	0165970	Door Closer Guide Support		0212600	Drain Trough Assembly (See SN Breaks)
45	3421310	Door Closer Guide	121	6201270	Screw, #8-18 x 5/8" PH PN SS-Gnd
46	0166360	Door Stop Cushion Retainer	122	3024010	Heat Shrink/Spray Cvr (Also order 6120180)
47	6180010	Pop Rivet, 1/8"	123	3520390	Compression Fitting
48	DS90	Door Stop - 90 Degree	124	3520390	Compression Fitting
	DS105	Door Stop - 105 Degree	125	3090280	Dual Water Valve
49	3450560	E-Ring, 7/16"	126	3520380	Compression Nut
50	3450550	E-Ring / Klipring, 5/16"	127	3520050	Brass Insert, Solenoid
51	3060140	SPST Light Switch	128	3520390	Compression Fitting
52	3060130	SPST Fan/Icemaker Switch	129	0167830	Solenoid Bracket
53	6160240	Nylon Spacer	130	6200060	Screw, #8-32 x 1/2" Pan HD
54	6200720	Screw, #8-18 x 1/2 PH Truss HD	131	6201270	Screw, #8-18 x 5/8" PH PN SS-Gnd
55	4161091	Frzr Front Panel Assy (See SN Breaks)	132	4200960	Door Dispenser Assembly
	4161471	Frzr Front Panel Assy (See SN Breaks)	133	6200850	Screw, #8 x 3/4" PH FH Hi-lo
56	6201270	Screw, #8-18 x 5/8" PH PN SS-Gnd	134	4161081	Ref. Front Panel Assy (See SN Breaks)
57	3030030	Light Bulb, 40 Watt		4161321	Ref. Front Panel Assy (See SN Breaks)
58	3050190	Light Socket, Single	135	3413380	Control Enclosure (See SN Breaks)
59	2600617	Plastic Water Line		3413810	Control Enclosure (See SN Breaks)
60	6220470	Fill Tube Clamp	136	6201270	Screw, #8-18 x 5/8" PH PN SS-Gnd
61	1607700	Water Inlet Tube	137	3421270	Hinge Bearing, 3/8" x 5/8"
62	2605411	Water inlet Tube extension, 2.06"	138	N/A	
63	6120450	Locking Cable Tie 9.7" BLK	139	4160932	Vertical Cntrl Pnl Assy (See SN Breaks)
64	3013820	Fill Tube Heater		4161462	Vertical Cntrl Pnl Assy (See SN Breaks)
65	3140390	Icemaker Rudder Arm	140	1801100	Heater Clip
66	4200522	Icemaker Assembly	141	4323190	Defrost Heater Assy (See SN Breaks)
67	6201000	Screw #8-32X3/8 Thread Forming		4324500	Defrost Heater Assy (See SN Breaks)
68	4202970	Ice Bucket Main Frame Assembly	142	4321820	Power Cord
69	6201270	Screw, #8-18 x 5/8" PH PN SS-Gnd	143	6110270	Bolt, #10-32 x 1/4" RD HD
70	4220420	Auger Motor Assy (Incl motor & switches)	144	3520250	Water Inlet Fitting Assy
71	6201270	Screw, #8-18 x 5/8" PH PN SS-Gnd	145	3140360	Fill Cup Plug
72	3082060	Defrost Terminator	146	4323180	Glass Well Heater (See SN Breaks)
73	3014350	Thermistor		4324680	Glass Well Heater (See SN Breaks)
74	6201270	Screw, #8-18 x 5/8" PH PN SS-Gnd	147	3050190	Light Socket, Single
			148	2604163	Water Inlet Line, Copper

680 MECHANICAL VIEW



680 SEALED SYSTEM PARTS LIST

<u>Ref #</u>	<u>Part #</u>	<u>Description</u>
1	4202250	Compressor, Freezer (DA73) (See SN Breaks)
	4202280	Compressor, Freezer (EMI60HER) (See SN Breaks)
2	3111041	Relay, (PTH490D-AS100) (Used with DA73 Compressor)
	3111460	Relay, (1351408) (Used with EMI60HER Compressor)
	3111430	Overload, (4TM419MFB) (Used with DA73 Compressor)
	3111470	Overload, (4TM757NFB) (Used with EMI60HER Compressor)
	3111070	Running Capacitor, (12Mf) (Used with DA73 Compressor)
3	4251340	Heat Exchanger, Freezer
4	4201880	Compressor, Refrig. (EMI30HER)
5	3111370	Relay, (1351400 - For EMI30HER Comp)
	3111410	Overload, (4TM734LFB - For EMI30HER Comp)
6	4251240	Heat Exchanger, Refrigerator
7	3120330	Condenser, Dual
8	3014230	Filter-Drier, High Side
9	6120170	Locking Cable Tie, Red, 11-1/2"
10	0168040	Drier Bracket
11	6201270	Screw, #8-18 x 5/8" PH PN SS-Gnd
12	4211460	Fre Evap Assy (Incl heat exch. & electricals) (See SN Breaks)
	4211640	Fre Evap Assy (Incl heat exch. & electricals) (See SN Breaks)
13	6160030	Spacer, 5/16 x 7/16 x 5/8"
	6160070	Sleeve, 5/16 x 7/16 x 7/8"
14	6201270	Screw, #8-18 x 5/8" PH PN SS-Gnd
15	3130260	Evaporator, Refrig.
16	6201270	Screw, #8-18 x 5/8" PH PN SS-Gnd
17	2600138	Drain Pan Heater Loop
18	3421410	Drain Pan Heater Loop Support
19	6200010	Screw, #10-12 x 3/4" Pan HD
20	6200010	Screw, #10-12 x 3/4" Pan HD
21	6150220	Nut, 5/16-18 Hex Zinc
22	6240050	Flat Washer, 5/16"
23	3150010	Rubber Grommet, Small, 5/8"
	3150170	Rubber Grommet, Large, 15/16"
24	3014100	Suction Line Drier (Service Only)

680 SEALED SYSTEM VIEW

24 - Suction Line Drier
(Not Shown)

